



FORMATION EVALUATION LOG



WELL : BASKER5

FROM (m): 950 TO (m): 2030 SCALE: 1/ 500

Country : AUSTRALIA	Latitude : 38°17'59.31"S	HOLE / CASING INFO 17 1/2" Hole to (mMDRT) : 1012m	Spud Date : 26-02-2006
Basin : GIPPSLAND	Longitude : 148°42'23.80"E	12 1/4" Hole to (mMDRT) : xxxm	Total Depth Date : xx-xx-2006
Field : BASKER	UTM Co-ord X (m E) : 650106.2	8 1/2" Hole to (mMDRT) : 3357m	Total Depth (mRT) : 3357m
Permit : VIC/L26	UTM Co-ord Y (m N) : 5761989.6	13 3/8" Shoe at (mMDRT) : 1001.3m	T.V.D. (mSS MSL) : 3072m
Well Type : DEVELOPMENT	RT-LAT (m) : 21.5	9 5/8" Shoe at (mMDRT) : xxx.xm	Status :
Rig Name : OCEAN PATRIOT	RT-Seabed (m) : 175.1	7" Shoe at (mMDRT) : xxxm	

ABBREVIATIONS

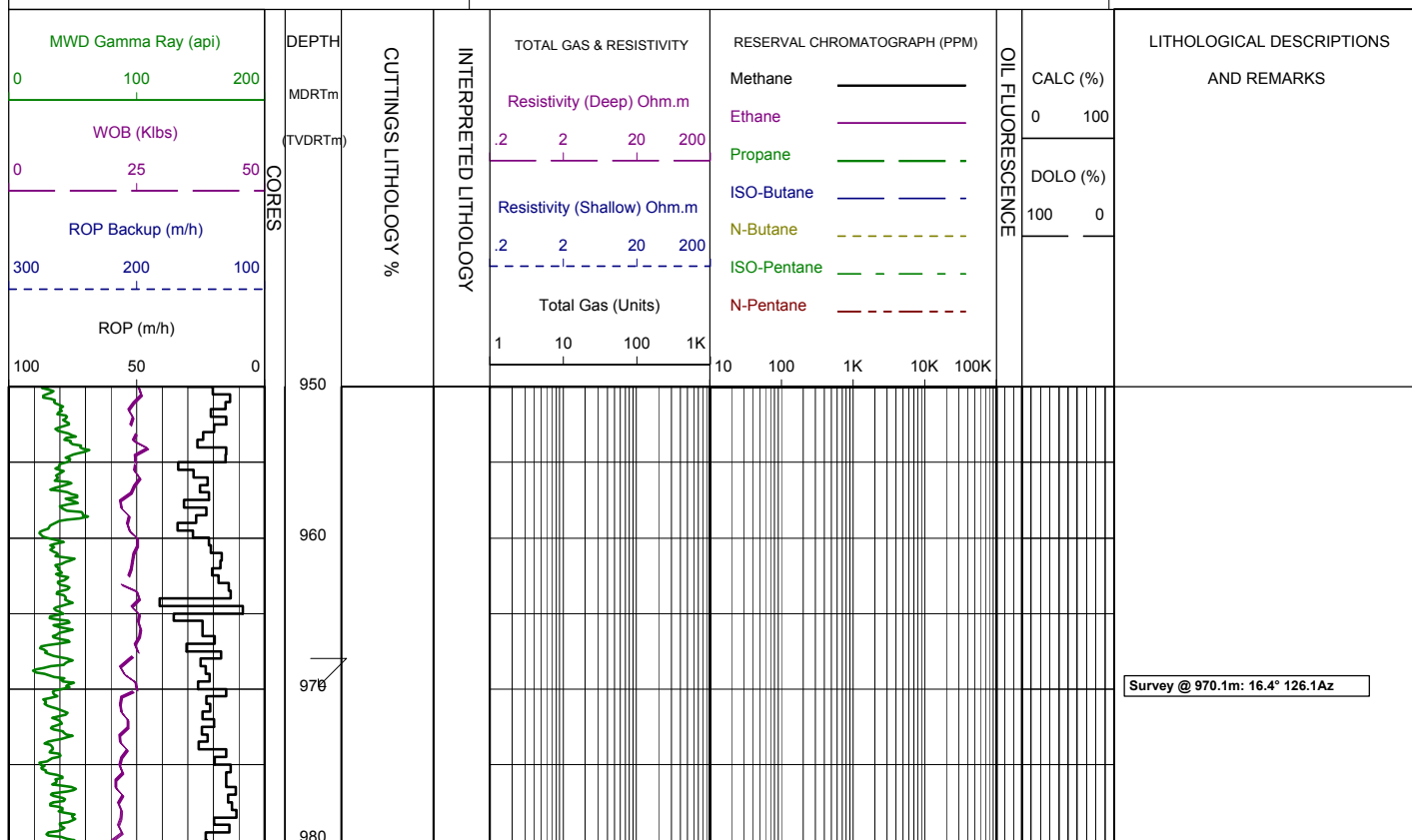
MW MUD WEIGHT	NB NEW BIT
FV FUNNEL VISCOSITY	RR RERUN BIT
PV PLASTIC VISCOSITY	CB CORE BIT
YP YIELD POINT	WOB WEIGHT ON BIT
FC FILTER CAKE	RPM REVS PER MINUTE
SOL SOLIDS	FLC FLOW CHECK
WL FILTRATE	CR CIRCULATE RETURNS
SD SAND - %	PR POOR RETURNS
S SALINITY - PPM	NR NO RETURNS
RM MUD RESISTIVITY	BG BACKGROUND GAS
RMF MUD FILTRATE	TG TRIP GAS
C CARBIDE TEST	STG SHORT TRIP GAS
LAT LOGGED AFTER TRIP	CG CONNECTION GAS
DS DEVIATION SURVEY	SG SWAB GAS
	SVG SURVEY GAS

LITHOLOGY LEGEND

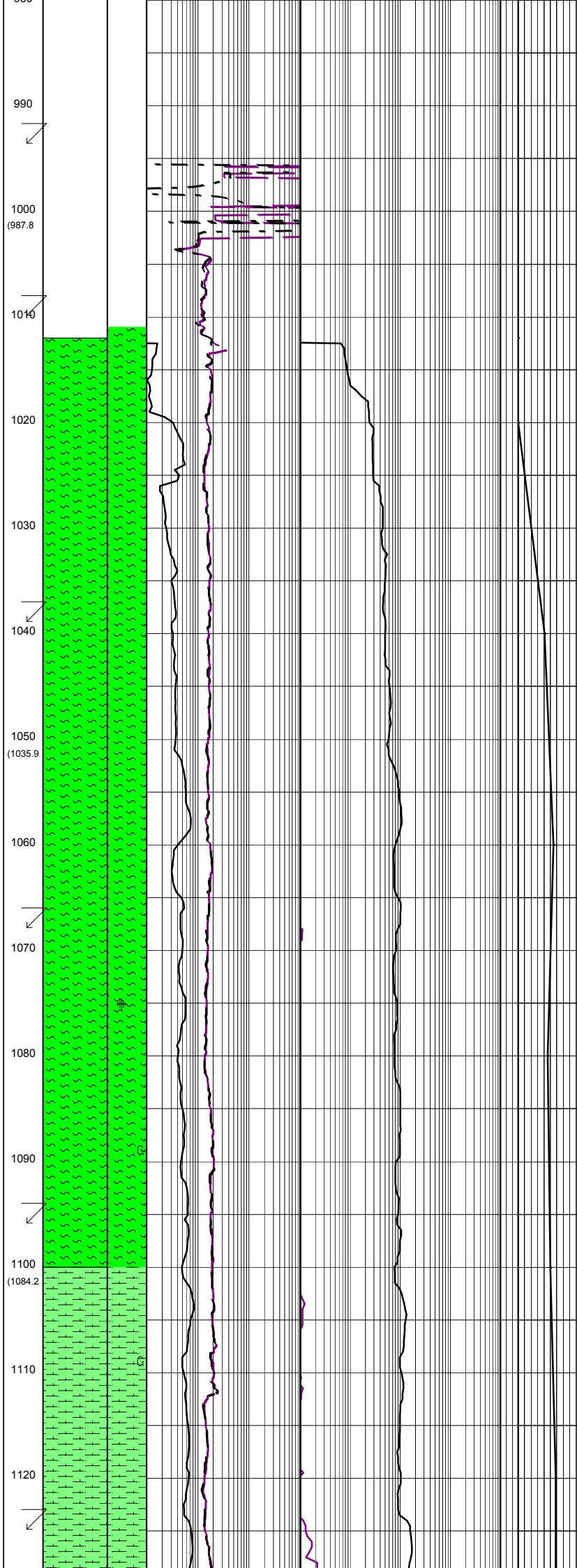
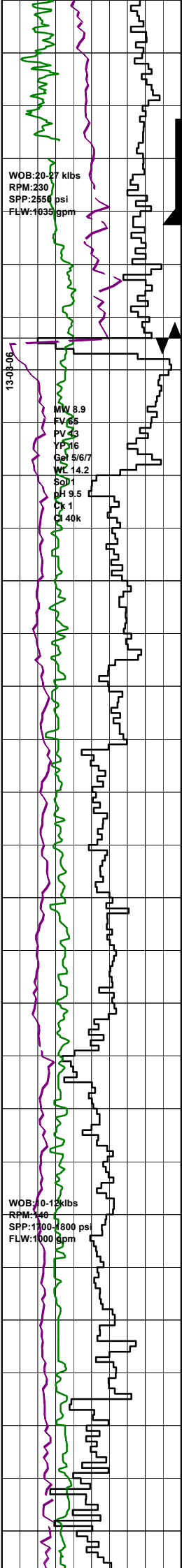
	Claystone		Limestone		Brachiopoda
	Siltstone		Dolomite		Cement
	ar. Silt ar		Coal		Sponges
	Fine SST		Gypsum		Glauconite
	Medium SST		Lithic Fragment		Pyrite
	Coarse SST		Foraminifera		Iron Minerals
	Marl		Fossils		Mica
	Clay, Limestone		Bryozoa		Carb Fragments

ENGINEERING LEGEND

	Shoe		FIT
	Mud loss		Mud gain
	Deviation survey		
	DST		
	Test		
	Sidewall Core		
	Core		
	RFT		



Survey @ 970.1m: 16.4° 126.1Az



Survey @ 993.7m: 16.4° 125.0Az

13 3/8" Casing Shoe set @
1001.3 mMDRT (989.1 mTVD)

Survey @ 1009.9m: 16.38° 124.4Az

Bit#: Reed Hycalog RSX616
SIZE: 311mm (12.25")
JETS: 6x20
IN: 1012m OUT: xxxm
RUN: m HRS:
COND:

KCL/PHPA/GLYCOL Mud System

FIT @ 1015m EMW=15.1ppg

MARL: cement contamination

Survey @ 1038.7m: 15.73° 124.2Az

MARL: lt olv gry-grn/lt gry, occ cal, sft-v sft, occ disp, blk-y-sbbkly.

Survey @ 1067.4m: 14.89° 123.4Az

MARL: lt olv gry-v lt gry, abdt cal, sft-v sft, occ disp, blk-y-sbbkly, occ amor.

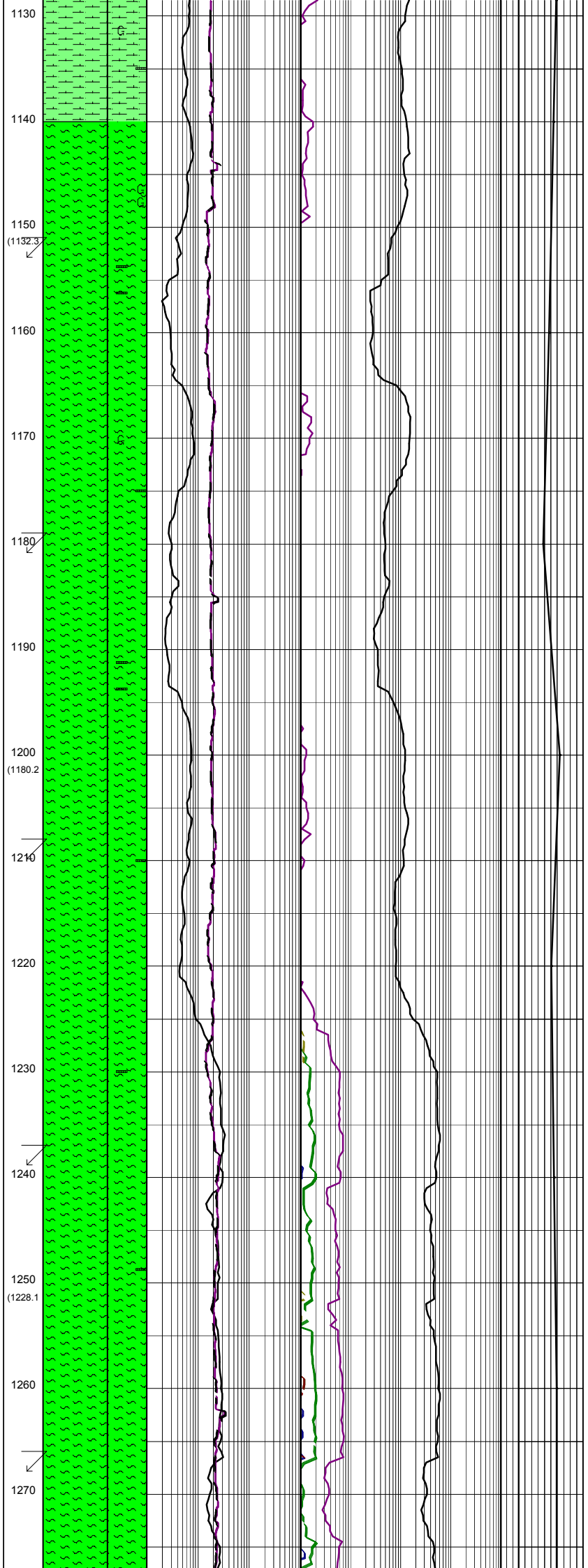
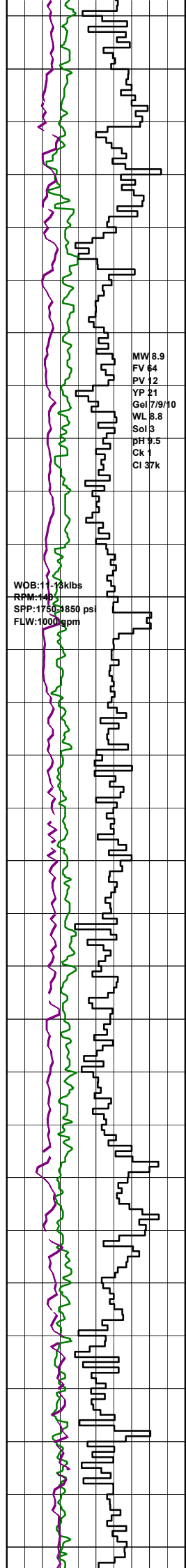
MARL: lt olv gry-v lt gry, tr pyr nod, tr glauc, abdt cal, sft-v sft, occ disp, blk-y-sbbkly, occ amor.

Survey @ 1096.0m: 14.75° 126.9Az

MARL: lt olv gry-v lt gry, tr glauc, abdt cal, sft-v sft, occ disp, blk-y-sbbkly, occ amor.

ARGILLACEOUS LIMESTONE: lt olv gry-v lt gry, tr off wh, tr glauc, abdt cal, sft-mod hd, occ disp, blk-y-sbbkly, occ amor.

Survey @ 1124.5m: 16.40° 134.6Az



ARGILLACEOUS LIMESTONE:lt olv gry-v lt gry,tr off wh,tr glauc, abdt cal,tr carb spks,sft-mod hd, occ disp,blky-sbbiky,occ amor.

Survey @ 1152.9m: 16.23° 138.2Az

MARL:lt olv gry-v lt gry, tr off wh,tr glauc,abdt cal, tr carb spks & lams,sft-mod hd, occ disp,blky-sbbiky,occ amor.

MARL:lt olv gry-v lt gry, tr glauc,abdt cal,tr carb spks sft-mod hd,occ disp,blky-sbbiky, occ amor.

Survey @ 1181.5m: 16.73° 135.9Az

MARL:yel gry-lt olv gry, abdt cal,tr carb spks,sft-mod hd, occ disp,blky-sbbiky,occ amor.

Survey @ 1210.2m: 17.58° 133.9Az

MARL:yel gry-lt olv gry, abdt cal,tr carb spks,sft-mod hd, occ disp,blky-sbbiky,occ amor.

Survey @ 1238.9m: 16.59° 132.1Az

MARL:yel gry-lt olv gry, abdt cal,tr carb spks,sft-mod hd, tr hd,occ disp,blky-sbbiky, occ amor.

MARL:yel gry-lt olv gry, abdt cal,tr carb spks,sft-mod hd, occ disp,blky-sbbiky,occ amor.

Survey @ 1267.8m: 16.05° 130.2Az

MARL:lt olv gry,occ yel/gry, slty,tr micmic,tr glauc,tr carb

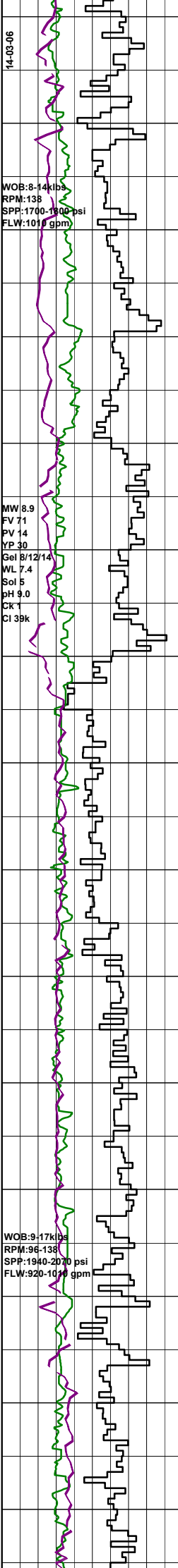
spks,rr pyr,sft-fm,occas mod hd,
blky-sbbiky.

14-03-06

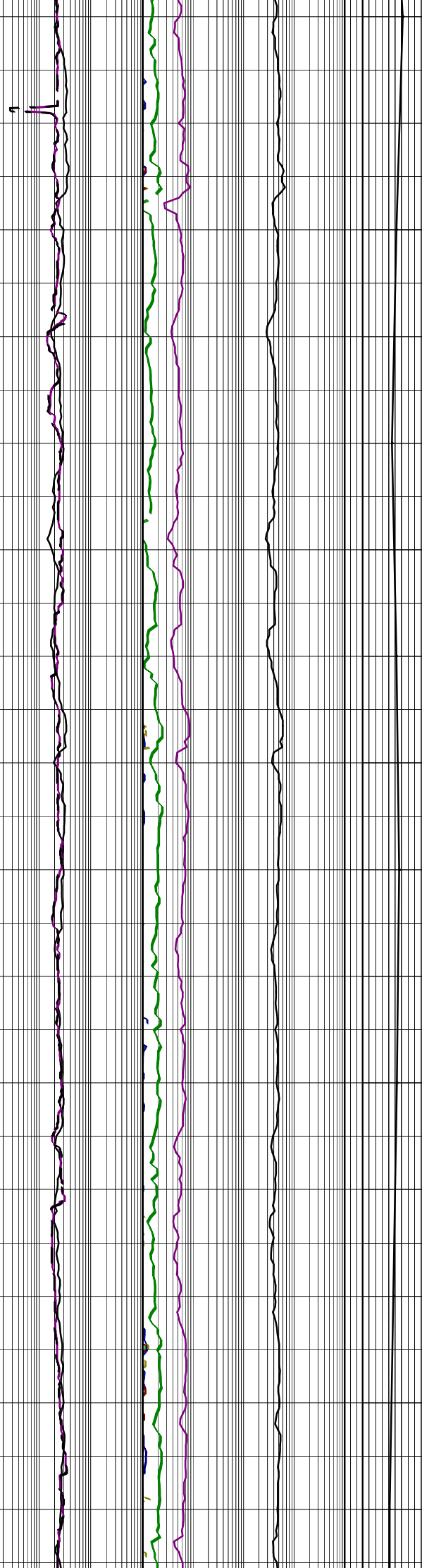
WOB:8-14klbs
RPM:138
SPP:1700-1800psi
FLW:1010 gpm

MW 8.9
FV 71
PV 14
YP 30
Gel 8/12/14
WL 7.4
Sol 5
pH 9.0
CK 1
Cl 39k

WOB:9-17klbs
RPM:96-138
SPP:1940-2070 psi
FLW:920-1030 gpm



1280
1290
1300 (1276.1)
1310
1320
1330
1340
1350 (1324)
1360
1370
1380
1390
1400 (1372.1)
1410
1420



Survey @ 1296.6m: 15.90° 127.4Az

MARL:lt olv gry,tr olv gry,
rr yel/gry,50-60% calc g/t
ARG LMST,rr-tr glauc,rr pyr,
pred sft-fm,occas hd-mod hd,
blky-sbbiky.

Survey @ 1325.6m: 16.69° 125.2Az

LMST:dk olv gry,rr carb spks,
cryxin,hd,blky.

MARL:lt olv gry,tr olv gry,
rr yel/gry,50-60% calc g/t
ARG LMST,rr-tr glauc,rr pyr,
pred sft-fm,occas hd-mod hd,
blky-sbbiky.

Survey @ 1354.3m: 16.66° 125.5Az

MARL:lt olv gry,tr olv gry,
rr yel/gry,50-60% calc g/t
ARG LMST,rr-tr glauc,rr pyr,
pred sft-fm,occas hd-mod hd,
blky-sbbiky.

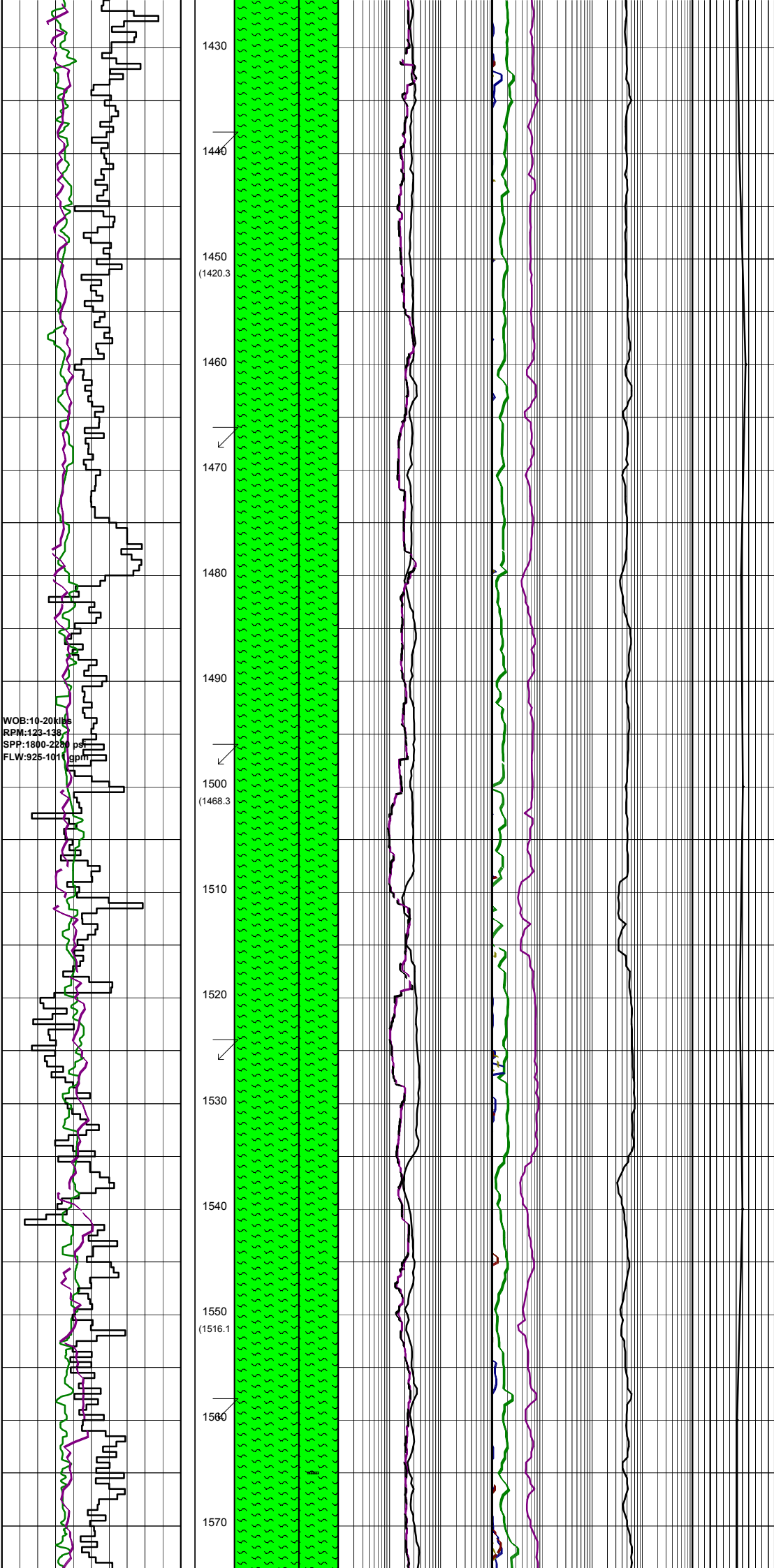
Survey @ 1382.9m: 16.08° 125.5Az

MARL:lt olv gry-olv gry,
rr-tr glauc,tr carb spks,
pred sft-fm,occas hd-mod hd,
blky-sbbiky.

Survey @ 1411.5m: 15.13° 125.3Az

MARL:lt olv gry-olv gry,
rr-tr glauc,tr carb spks,
pred sft-fm,occas hd-mod hd,
blky-sbbiky.

pred sft frm, occ hd-mod hd, biky-sbbiky.



1430
1440
1450 (1420.3)
1460
1470
1480
1490
1500 (1468.3)
1510
1520
1530
1540
1550 (1516.1)
1560
1570

Survey @ 1440.0m: 15.23° 124.0Az

MARL:lt olv gry-olv gry,
rr-tr glauc,tr carb spks,
pred sft frm,occ hd-mod hd,
biky-sbbiky.

Survey @ 1468.6m: 16.16° 125.2Az

MARL:lt olv gry-olv gry,
rr-tr glauc,tr carb spks,
pred sft frm,occ hd-mod hd,
biky-sbbiky.

Survey @ 1497.2m: 16.73° 127.9Az

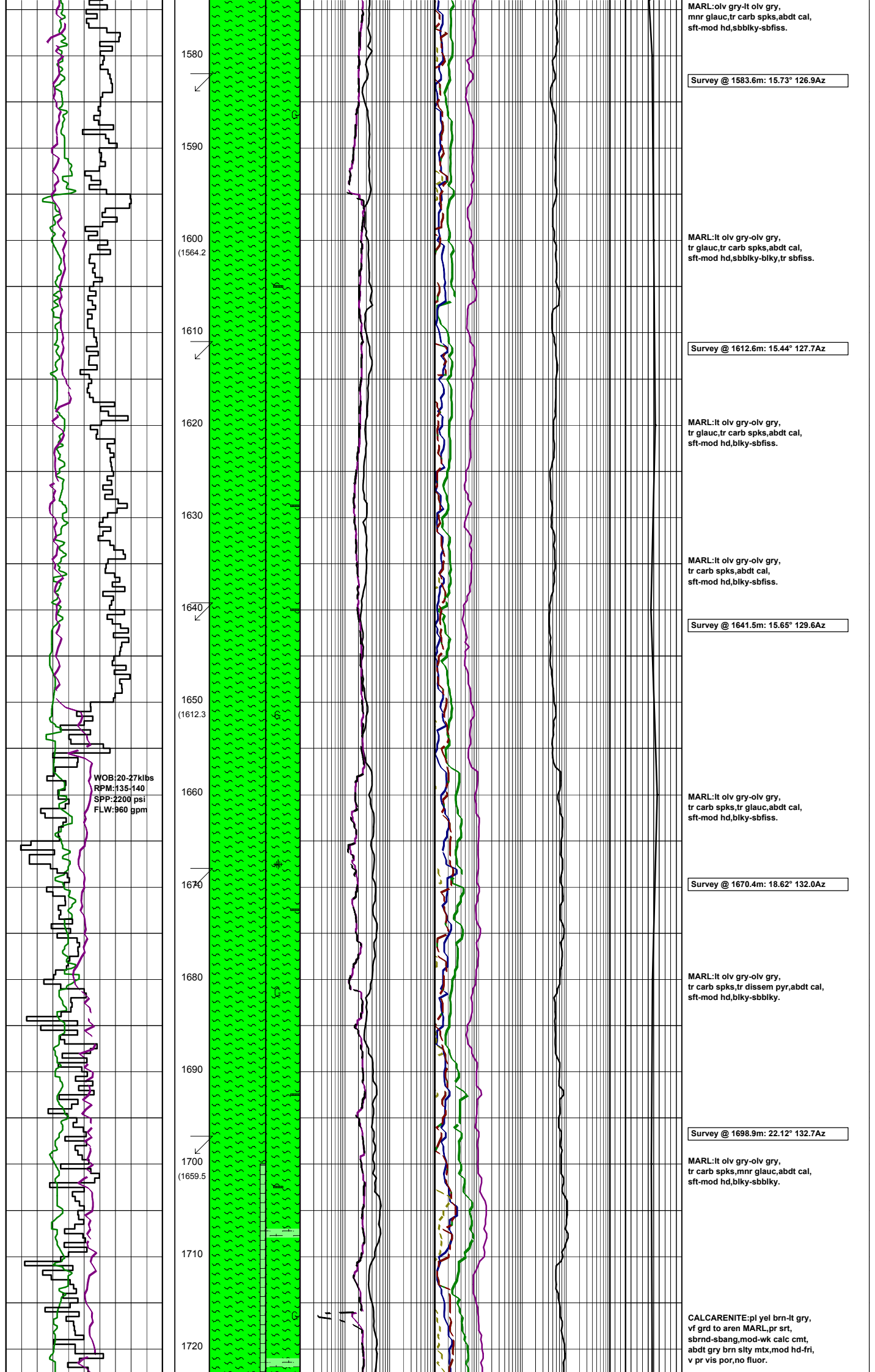
MARL:lt olv gry-olv gry,
rr-tr glauc,tr carb spks,
pred sft frm,occ hd-mod hd,
biky-sbbiky.

Survey @ 1526.0m: 17.18° 127.7Az

MARL:lt olv gry-olv gry,tr med dk
gry,rr-tr glauc,tr carb spks,tr
fg pyr,pred sft frm,occ hd-mod hd,
biky-sbbiky.

Survey @ 1554.7m: 16.59° 127.2Az

WOB:10-20klbs
RPM:123-138
SPP:1800-2200 psf
FLW:925-1011 gpm



MARL: olv gry-lt olv gry,
mnr glauc, tr carb spks, abdt cal,
sft-mod hd, sbblky-sbfiss.

Survey @ 1583.6m: 15.73° 126.9Az

MARL: lt olv gry-olv gry,
tr glauc, tr carb spks, abdt cal,
sft-mod hd, sbblky-blky, tr sbfiss.

Survey @ 1612.6m: 15.44° 127.7Az

MARL: lt olv gry-olv gry,
tr glauc, tr carb spks, abdt cal,
sft-mod hd, blky-sbfiss.

MARL: lt olv gry-olv gry,
tr carb spks, abdt cal,
sft-mod hd, blky-sbfiss.

Survey @ 1641.5m: 15.65° 129.6Az

WOB: 20-27klbs
RPM: 135-140
SPP: 2200 psi
FLW: 960 gpm

MARL: lt olv gry-olv gry,
tr carb spks, tr glauc, abdt cal,
sft-mod hd, blky-sbfiss.

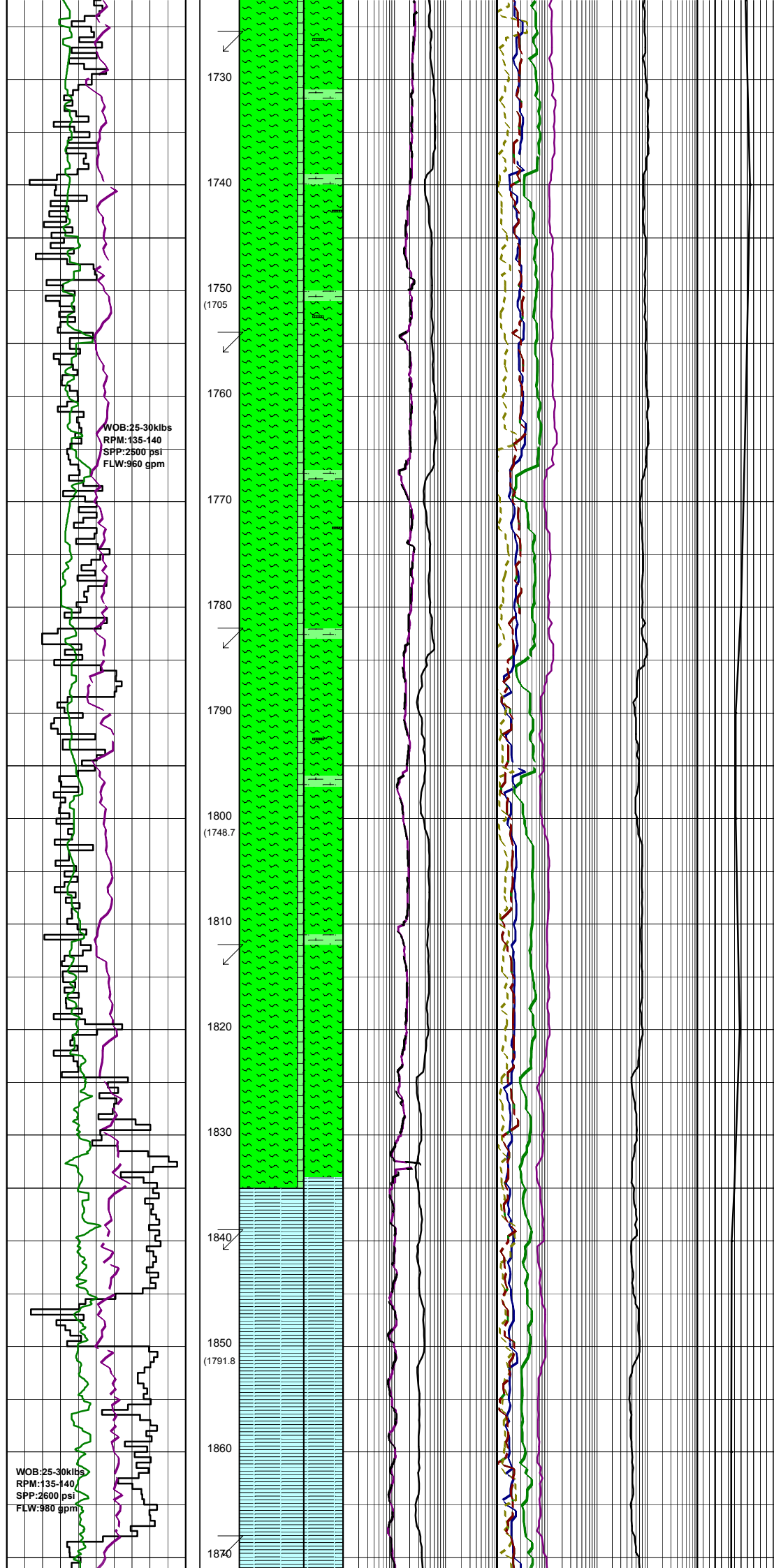
Survey @ 1670.4m: 18.62° 132.0Az

MARL: lt olv gry-olv gry,
tr carb spks, tr dissem pyr, abdt cal,
sft-mod hd, blky-sbblky.

Survey @ 1698.9m: 22.12° 132.7Az

MARL: lt olv gry-olv gry,
tr carb spks, mnr glauc, abdt cal,
sft-mod hd, blky-sbblky.

CALCARENITE: pl yel brn-lt gry,
vf grd to aren MARL, pr srt,
sbrnd-sbang, mod-wk calc cmt,
abdt gry brn stly mtx, mod hd-fri,
v pr vis por, no fluor.



WOB:25-30klbs
 RPM:135-140
 SPP:2500 psi
 FLW:960 gpm

WOB:25-30klbs
 RPM:135-140
 SPP:2600 psi
 FLW:980 gpm

Survey @ 1727.6m: 24.53° 134.2Az

MARL:lt olv gry-olv gry,
 tr carb spks,abdt cal,sft-mod hd,
 blk-sbbkly.

Survey @ 1756.3m: 27.33° 131.9Az

CALCARENITE:pl yel brn-lt gry,
 vf grd to aren MARL,pr srt,
 sbrnd-sbang,wk-mod hd calc cmt,
 abdt gry brn slty mtx,fri-mod hd,
 v pr vis por,no fluor.

MARL:lt olv gry-olv gry,
 tr carb spks,abdt cal,sft-mod hd,
 blk-sbfiss.

Survey @ 1784.5m: 30.34° 130.4Az

CALCARENITE:pl yel brn-lt gry,
 vf grd to aren MARL,pr srt,
 sbrnd-sbang,wk-occ hd calc cmt,
 abdt gry brn slty mtx,fri-occ hd,
 v pr vis por,no fluor.

Survey @ 1813.1m: 30.05° 129.9Az

MARL:lt olv gry-olv gry,
 tr carb spks,abdt cal,sft-mod hd,
 blk-sbbkly.

CALCAREOUS CLAYSTONE:med gry-
 lt gry,occ cal,sft-frm,sbbkly-
 sbfiss.

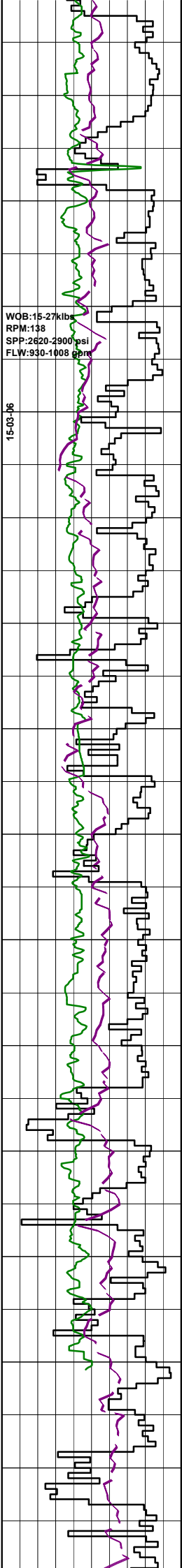
Survey @ 1841.5m: 31.13° 128.0Az

CALCAREOUS CLAYSTONE:med gry-
 lt gry,occ cal,sft-frm,tr mod hd,
 sbbkly-sbfiss.

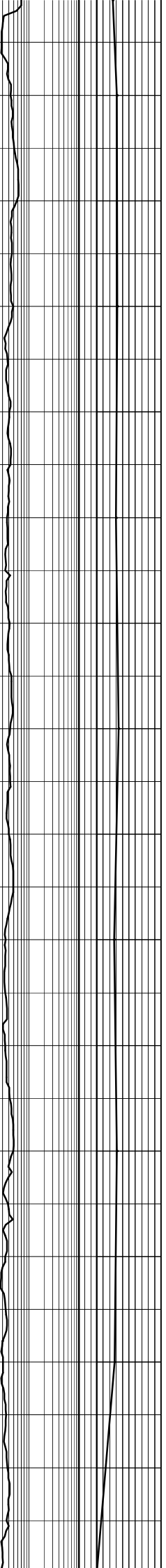
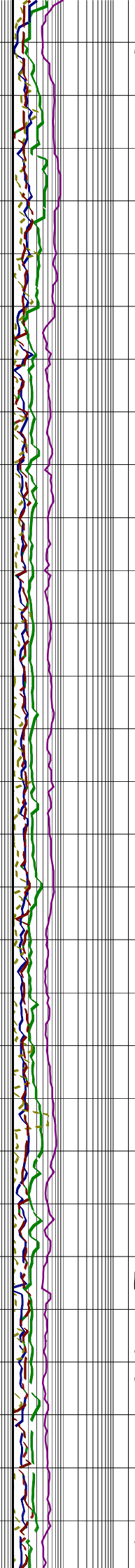
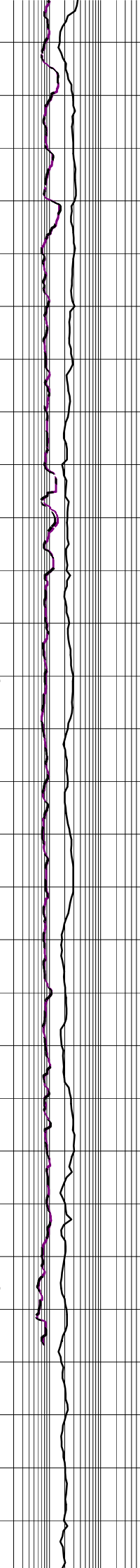
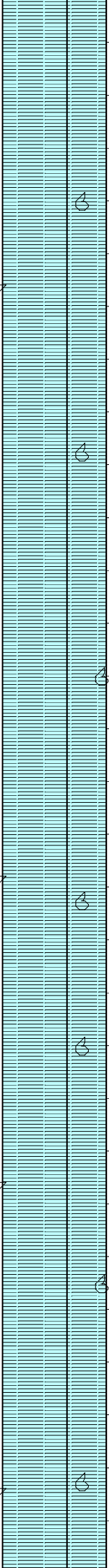
Survey @ 1870.1m: 30.23° 126.9Az

WOB:15-27klb
RPM:138
SPP:2620-2900 psi
FLW:930-1008 gpm

15-03-06



1880
1890
1900
(1835)
1910
1920
1930
1940
1950
(1878.3)
1960
1970
1980
1990
2000
(1921.7)
2010
2020



CALCAREOUS CLAYSTONE:med gry-
lt gry,occ cal,frm-mod hd,occ sft,
sbbiky-sbfiss.

Survey @ 1899.0m: 29.72° 125.9Az

CALCAREOUS CLAYSTONE:med
dk gry-olv gry,tr slt,25-30% calc,
tr pyr,rr glauc,rr foss frag,tr cal,
sft-frm,sbbiky,occ sbfiss,amor i/p,
occ disp & w/out.

Survey @ 1927.8m: 30.28° 125.2Az

CALCAREOUS CLAYSTONE:med
dk gry-olv gry,tr slt,25-30% calc,
tr pyr,rr glauc,rr foss frag,tr cal,
sft-frm,sbbiky,occ sbfiss,amor i/p,
occ disp & w/out.

Survey @ 1956.6m: 30.10° 124.8Az

CALCAREOUS CLAYSTONE:lt olv
gry-olv gry,tr slt,25-30% calc,
tr pyr,rr glauc,abdt foss frag,occ
cal,sft-frm,sbbiky,occ sbfiss,
amor i/p,occ disp & w/out.

Survey @ 1985.4m: 29.42° 124.8Az

